

A MILTON LANDING / NEPONSET ESTUARY

The mouth of Neponset River where fresh water meets salt water entering tidally from Boston Harbor to become brackish water. Essential environment for many fish species. Designated Area of Critical Environmental Concern (ACEC).



B BAKER DAM / ROPER BRIDGE

Large dam upstream from the bridge is artifact of historical factories and mills. Israel Stoughton ran a grain mill nearby in 1634. Chocolate factories once dominated the area also known as Chocolate Village. Migratory fish are blocked from spawning sites at this point. Efforts underway to bring back natural ecosystem.



C CENTRAL AVENUE BRIDGE

Shops and trolley station dominate this busy area. River is difficult to notice. Human activity takes its toll on the environment. In recent years, new recreation areas and a bike path have had a positive impact in revealing the river.



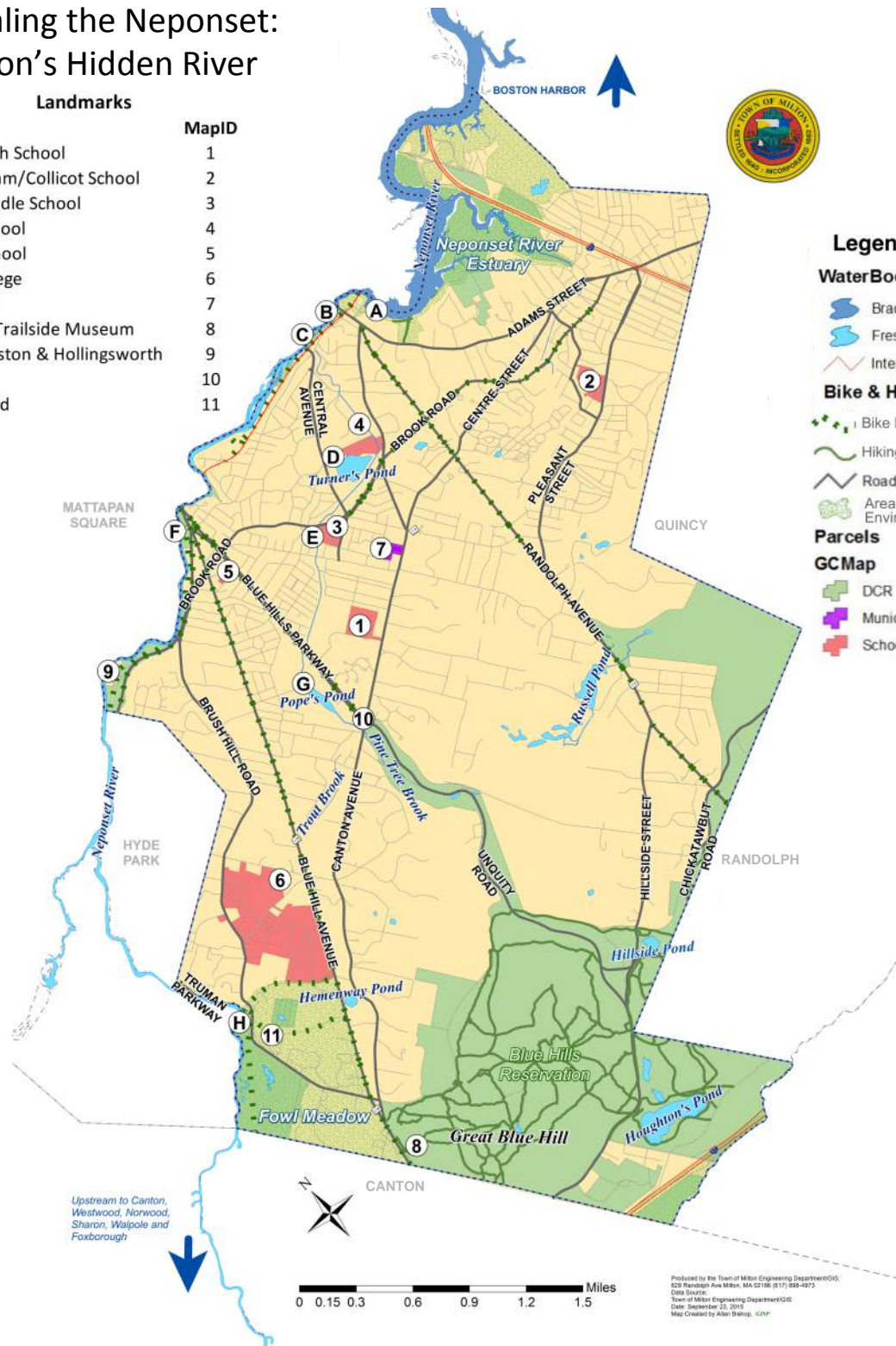
D TURNER'S POND

Tranquil freshwater pond within the Neponset River Watershed. Circled by a crushed stone pathway and set in a 26-acre park of woodlands and wetlands. A former ice pond connected to the river by Pine Tree Brook. Licensed fishing.



Revealing the Neponset: Milton's Hidden River

| Name | MapID |
|--------------------------------|-------|
| Milton High School | 1 |
| Cunningham/Collicot School | 2 |
| Pierce Middle School | 3 |
| Glover School | 4 |
| Tucker School | 5 |
| Curry College | 6 |
| Town Hall | 7 |
| Blue Hills Trailside Museum | 8 |
| Dam - Tileston & Hollingsworth | 9 |
| Ulin Rink | 10 |
| Flatley Field | 11 |



E TREE FILTER BOXES / STORM DRAINS

Heavily paved area of Lincoln Street with tree filter boxes located at end of street near Brook Road. Soil in the boxes filters pollutants from runoff, rainfall, and trash. Water drains into pipes connected to Pine Tree Brook.



F DCR NEPONSET ESPLANADE PARK

Beginning of the park which extends from Mattapan Square to Paul's Bridge in Hyde Park. A set of stairs leads down to a canoe launch on the river and a quiet oasis away from the hustle and bustle of street level traffic. A multi-use trail begins here and follows the river upstream.



G POPE'S POND

Originally, a rural meadow but dredged and dammed to create ice pond. Thick surrounding vegetation creates feeling of isolation. Wooded habitat for many birds and animals. Pond stocked for licensed fishing each spring.



H PAUL'S BRIDGE / FOWL MEADOW

A bridge has existed on this site since the mid-1700's. Stone bridge built in 1849 on National Register of Historic Places. Adjacent Fowl Meadow is a bird watcher's paradise. Rare wetland habitat earned it an ACEC designation.



REVEALING THE NEPONSET'S CHALLENGES

YOUR ROLE IN THE SOLUTION

SEWAGE CONTAMINATION

Maintain a healthy septic system connected to a wastewater treatment pipe.

STORMWATER RUNOFF

Reduce/replace non-absorbent pavement with pervious (porous) surfaces; monitor property development proposals and speak up for protective setbacks, water recharge and treatment systems, mitigating landscaping and paving designs; create a rain garden; be mindful of the products you purchase/use in your home, your garden, and garage.

“LEGACY TOXINS” (like PCBs from old industrial sites)

Advocate for accountability, awareness, and strategic removal/cleanups.

LOW WATER LEVELS

Conserve water, especially in summer / dry spells: use water efficient "EnergyStar" or "WaterSense" appliances and toilets; install low-flow aerator devices in shower heads/faucets; fix leaks; develop thrifty habits using water at home (kitchen, bathroom, garden) and at work.

OLD DAMS

Advocate to remove antiquated dams, restoring naturally flowing water to benefit water quality, stream flow, public health, fauna (especially fish), flora, and public recreation.

ECOSYSTEM DEGRADATION

(exotic/invasive plants, human impacts - litter, habitat loss, pollution, bad habits, etc.) Plant native species; “leave no trace” (litter, pet waste) from recreational activities; defend your town from ill-planned real estate development; live and garden sustainably for lowest earth-impact; join a conservation nonprofit and volunteer; educate yourself, your family, and your neighbors.

SPECIAL THANKS

- All the unsung volunteers who clean up the Neponset River, its ponds and tributaries, seasonally, and who monitor its health, monthly
- Massachusetts Audubon Society, Blue Hills Trailside Museum
- Milton Access Television - Mike Lynch, Shane Brandenburg, Kyle Murphy
- Milton Department of Public Works, Engineering/GIS - Allan Bishop
- Milton Garden Club (1992-Present), leadership - Natalie Albers, Judith Darell-Kemp, Cyndy Fish, Anke Herbert, Cindy Hilgendorf*, Mary Keally, Sidney Kenyon, Mary McLaughlin, Becky Simonds, Tucker Smith, Mary Truslow, Leslie Will
*In memoriam
- Milton Public Schools - All Principals and Fourth Grade Teachers at Collicott, Cunningham, Glover, and Tucker Elementary Schools; Milton Elementary School Science Coordinator - Bernadette Moonan
- Neponset River Watershed Association (NepRWA) - Ian Cooke, Nancy Fyler
- Thomas Palmer
- Luca Sandonato & Family



Milton Garden Club
Member, Garden Club of America

Trailways and Waterways-
Milton's Natural Resources
GCA Flower Show - Zone 1
Conservation Committee Exhibit
October 13, 2015

Revealing the Neponset Milton's Hidden River



A Guide to the Neponset River and Its Watershed in Milton, Massachusetts

USING THIS MAP

We invite you to explore the Neponset, Milton's hidden river. The map inside highlights eight sites around Milton in the Neponset Watershed.

Sites are ordered from A through H. By visiting each site, we hope to reveal Milton's hidden river, the Neponset.

For more information on these sites, go to

miltonneponset.wordpress.com.

There, you will find detailed descriptions of the location, history, stewardship opportunities, and activities available at the site.

Key to icons related to sites on the map:

-  Boating
-  Cycling
-  Running, Walking, Hiking
-  Shopping
-  Dining
-  Cross Country Skiing
-  Playground
-  Fishing
-  Bird Watching
-  Picnic Area
-  Accessible