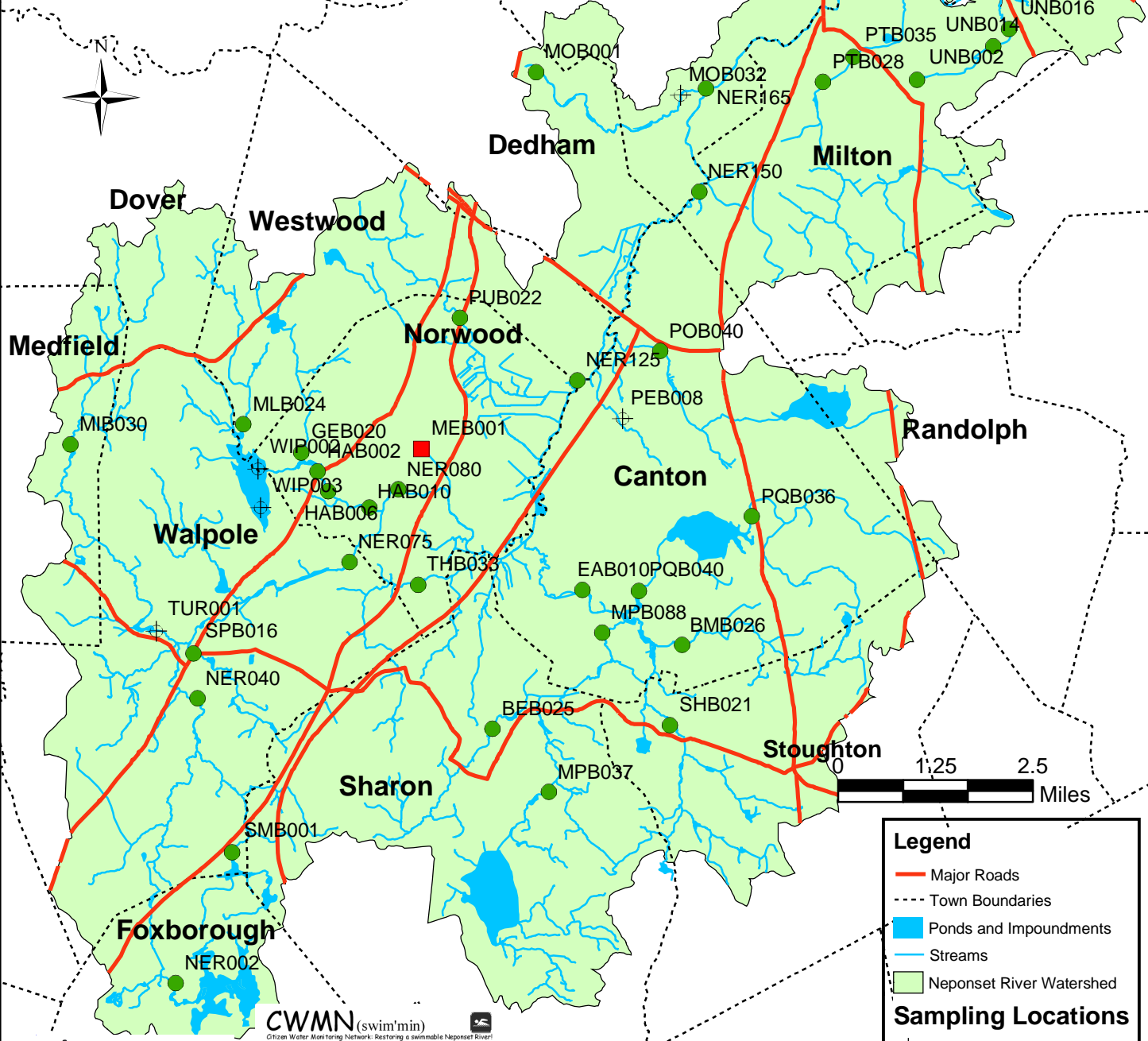


Water Quality Conditions in the Neponset River Watershed Parameter: Fecal Coliform Bacteria

Samples collected March 26, 2003
0.00 inches of rain at Blue Hills
24 hours prior to sampling



Legend

- Major Roads
- - - Town Boundaries
- Ponds and Impoundments
- Streams
- Neponset River Watershed

Sampling Locations

- ⊕ No Data
- Swimmable
- ▲ Fishable
- Violates

Water quality conditions at sampling locations are classified according to the Massachusetts Surface Water Quality Standards for Class B waters using the parameter, fecal coliform bacteria (cfu/100ml) (314 CMR 4.00)

NepRWA
Neponset River Watershed Association
490 Chapman Street, Suite One B
Canton, MA 02021
p: 781-575-0354, f: 781-575-9971
www.neponset.org, staff@neponset.org

The Citizen's Water Monitoring Network (CWMN) is administered by the Neponset River Watershed Association in cooperation with the US EPA and MWRA
Funded in part by: Massachusetts Department of Environmental Protection, Boston Water and Sewer Commission, The Executive Office of Environmental Affairs, The Copeland Family Foundation and Local Citizens and Businesses.