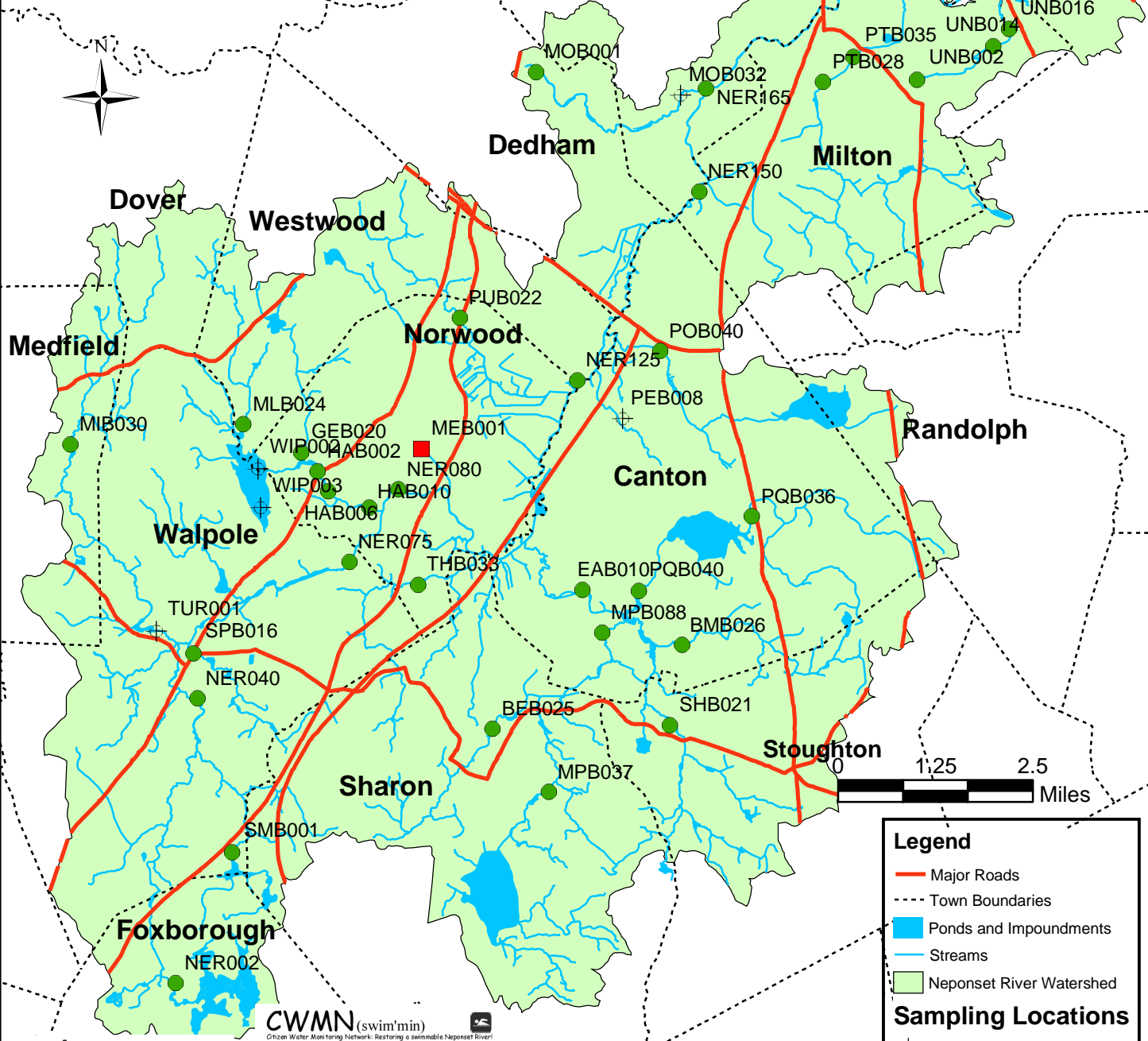


Water Quality Conditions in the Neponset River Watershed Parameter: Fecal Coliform Bacteria

Samples collected March 26, 2003
0.00 inches of rain at Blue Hills
24 hours prior to sampling



Legend

- Major Roads
- - - Town Boundaries
- Ponds and Impoundments
- Streams
- Neponset River Watershed

Sampling Locations

- ⊕ No Data
- Swimmable
- ▲ Fishable
- Violates

NepRWA
Neponset River Watershed Association
490 Chapman Street, Suite One B
Canton, MA 02021
p: 781-575-0354, f: 781-575-9971
www.neponset.org, staff@neponset.org

The Citizen's Water Monitoring Network (CWMN) is administered by the Neponset River Watershed Association in cooperation with the US EPA and MWRA
Funded in part by: Massachusetts Department of Environmental Protection, Boston Water and Sewer Commission, The Executive Office of Environmental Affairs, The Copeland Family Foundation and Local Citizens and Businesses.

Water quality conditions at sampling locations are classified according to the Massachusetts Surface Water Quality Standards for Class B waters using the parameter, fecal coliform bacteria (cfu/100ml) (314 CMR 4.00)